

Ginlong Software User Manual

(Rev. 0.3)

1. Hardware list

Ginlong Inverter, RS485 Cable, PC, RS485/RS232 Converter.



Picture 1. Ginlong Inverter



Picture 2. RS485 Cable



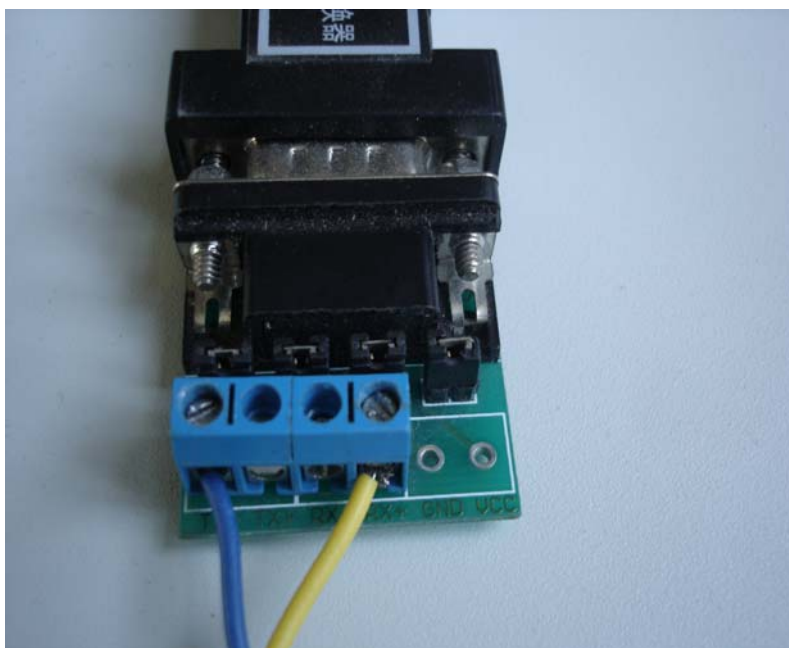
Picture 3. RS485/RS232 Converter



Picture 4. PC

2. How to establish a connection between inverter and PC

As shown in picture 1, connect RS485 cable to the COM interface on the Ginlong inverter. The other end of RS485 cable needs to be connected with RS485/RS232 converter. There are two RS 485 cables with different color (yellow and blue); the yellow one needs to be connected with RX + and the blue one to TX- as below in picture 5. Finally, plug Connect RS485/RS232 converter into the PC as below showed in picture 6 and make sure all of the connections are OK.



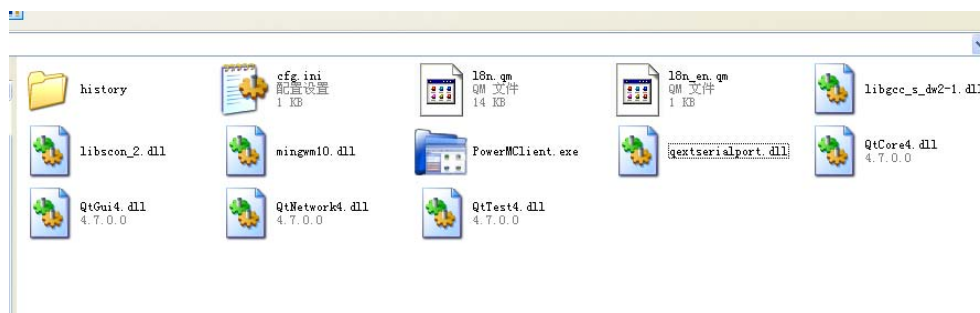
Picture 5. RS 485 cable with RS485/RS232 Converter



Picture 6. RS485/RS232 Converter connected with PC

3. Start with Ginlong Monitor Software

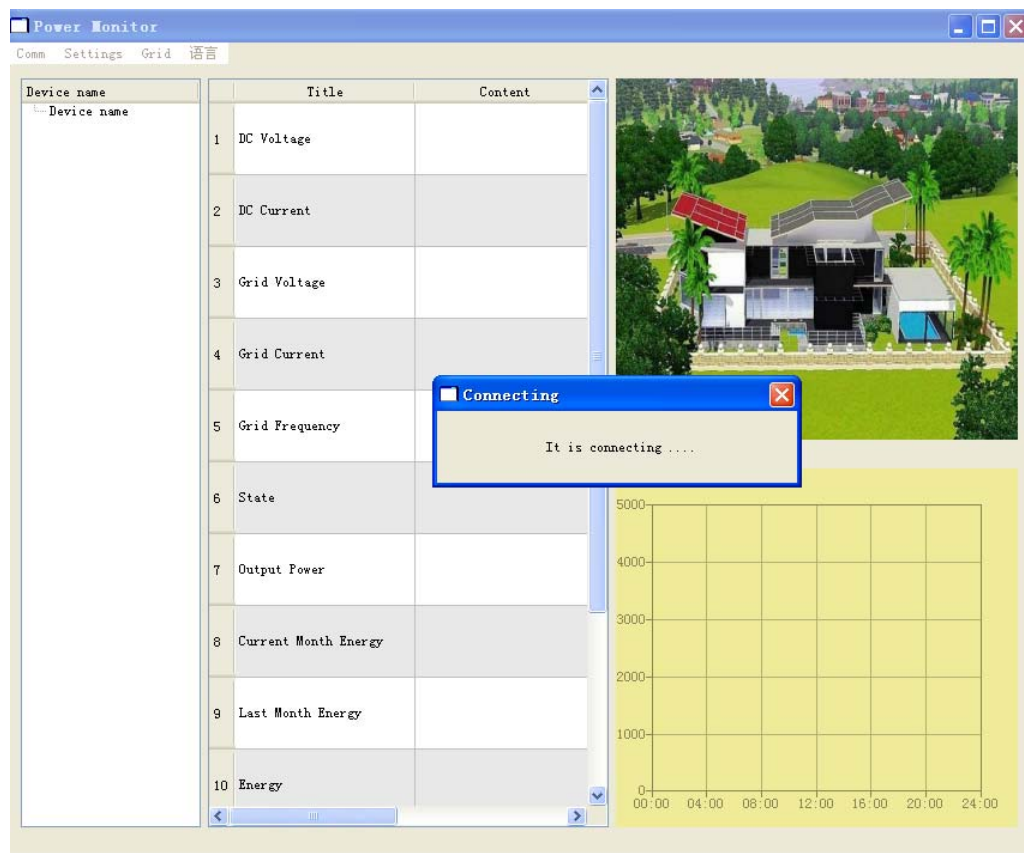
Double click the icon of PowerMClient to start to run Ginlong software as showed below, or start it from the window program menu.



Picture 7. Start Ginlong software

4. Address Connection

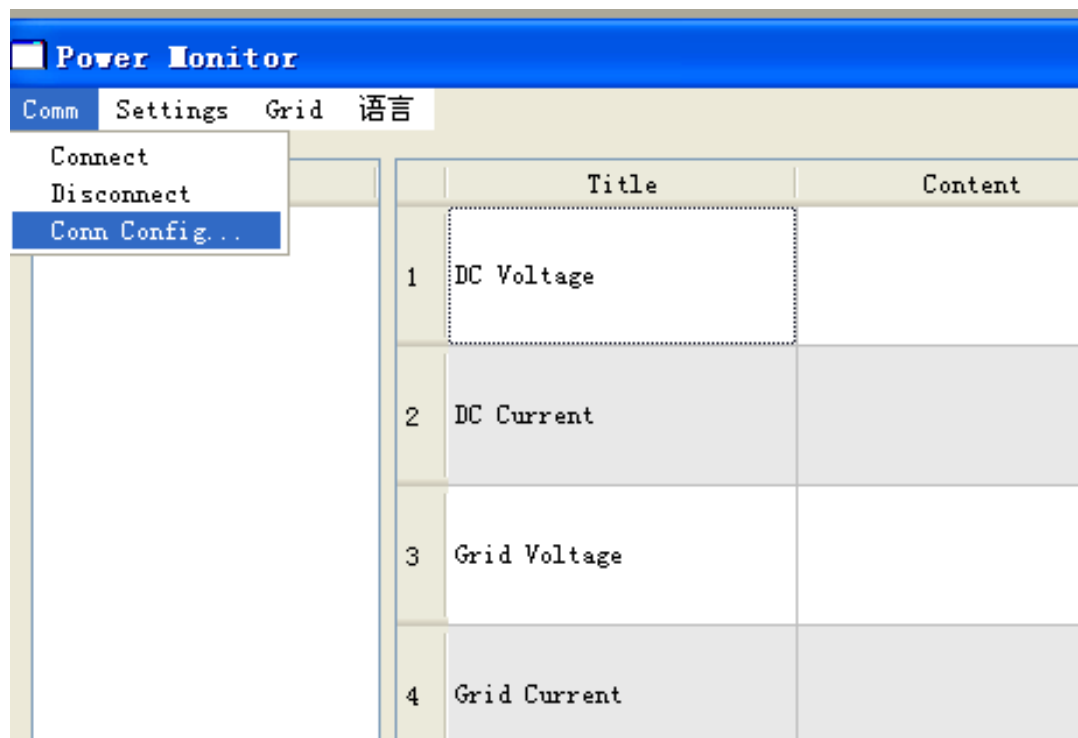
After Clicking the icon, the power monitor is searching the inverters which device Id address are from 1 to 2 by default.



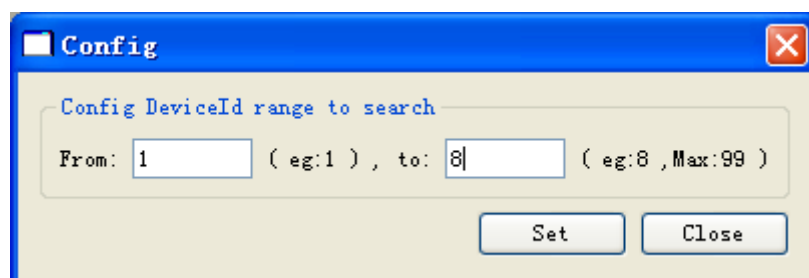
Picture 8. Address Connection Interface

If inverters are found, the monitor will get to main interface with inverters' information.

If inverters are not found, maybe the cable is not connected well, or it is also possible that the inverter's device Id address is not in the searching range, please use **Comm->Conn Config...** to change the device searching range.



Your inverter's Id address should be in the "From", "to" searching range, then it can be found.(you can get the inverter Id address by operating the inverter's LCD control panel), then please set the "From", "to" searching address value and reconnect by clicking Conn->Connect.



5. Main Interface

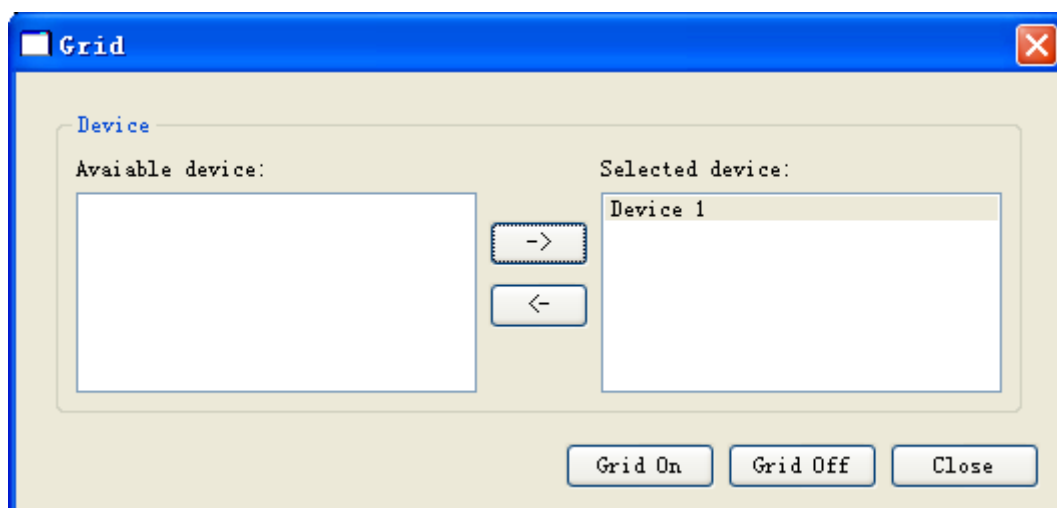
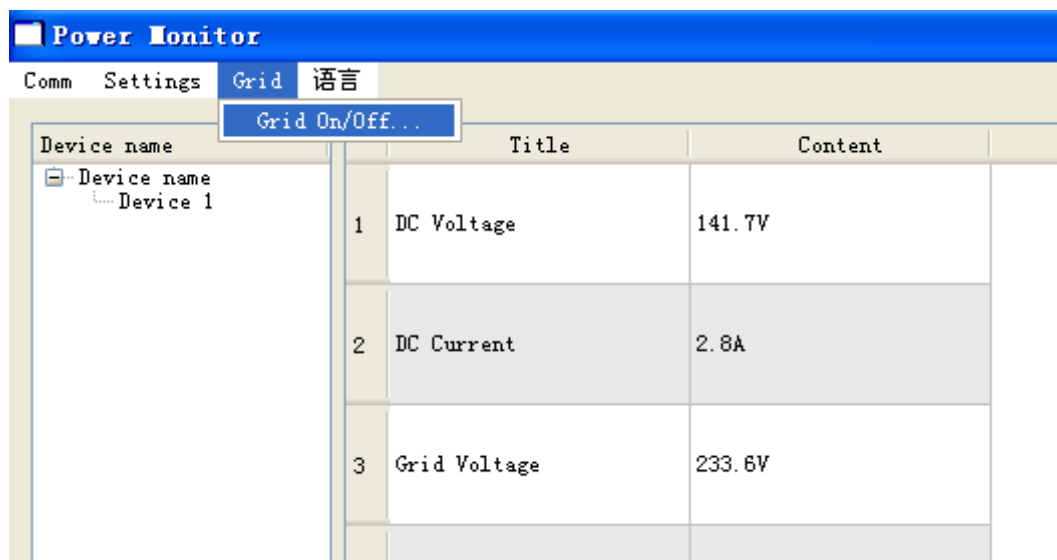


Picture 9. Software main interface

- 1 For the settings.
- 2 Device list for inverters
- 3 The spot values for each inverter, eg: current month energy, last month energy, etc
- 4 The realtime output power curve graph

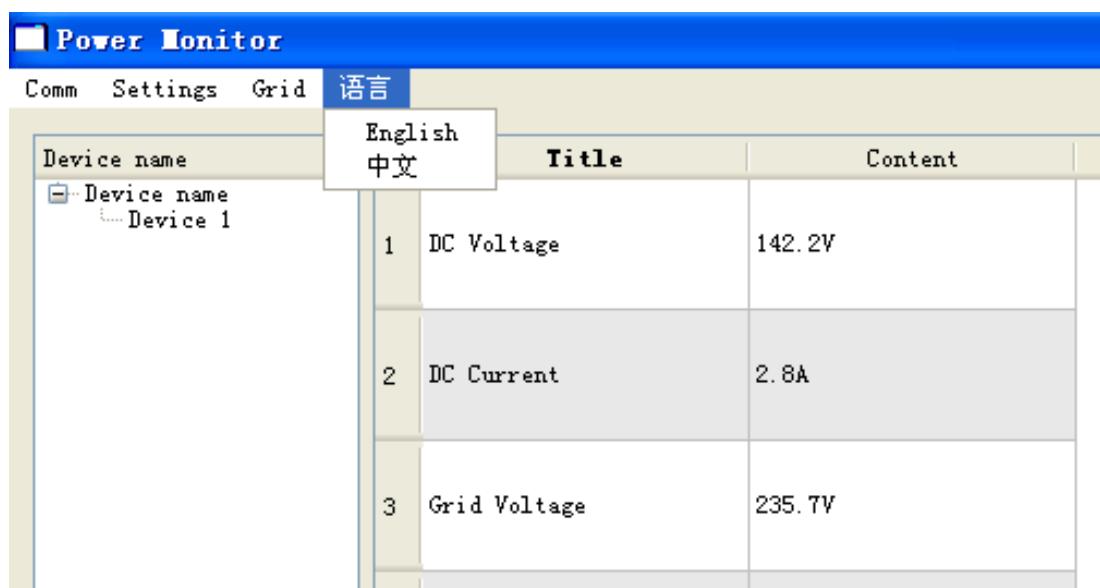
● **Grid control:**

After you logged in, If you want to do the settings (e.g. Country standards selection, etc), please click the “**Grid Off**” before you do any setting. After setting is done, click “**Grid On**” and check the information you set.



- **Language:**

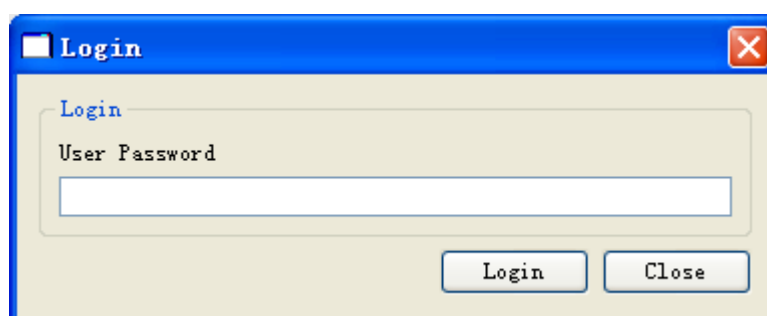
This menu button below is used to select the right language of the software.



6. How to use the Advanced Setting

- **User Login:**

After login, we can do the settings, The initial password is “0010”.



- **Power Curve**

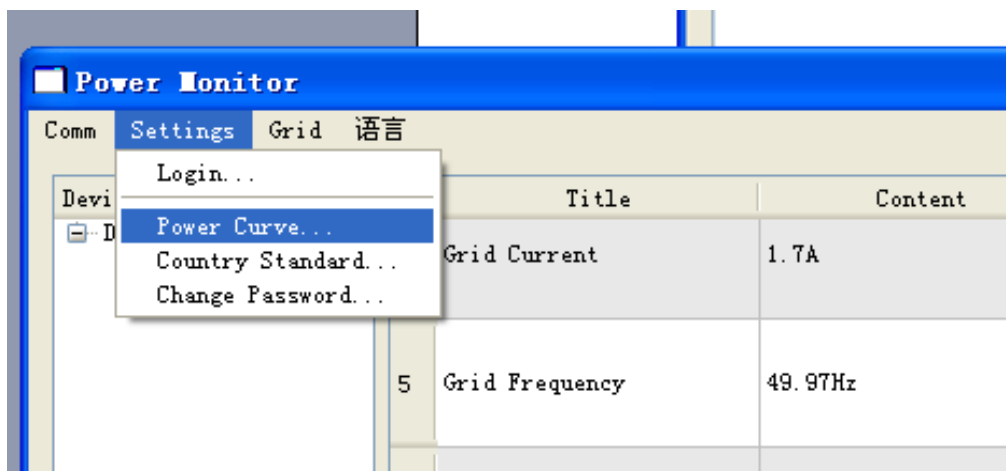
Current Power Curve Id

The current power curve id is shown in main interface.

Power Monitor

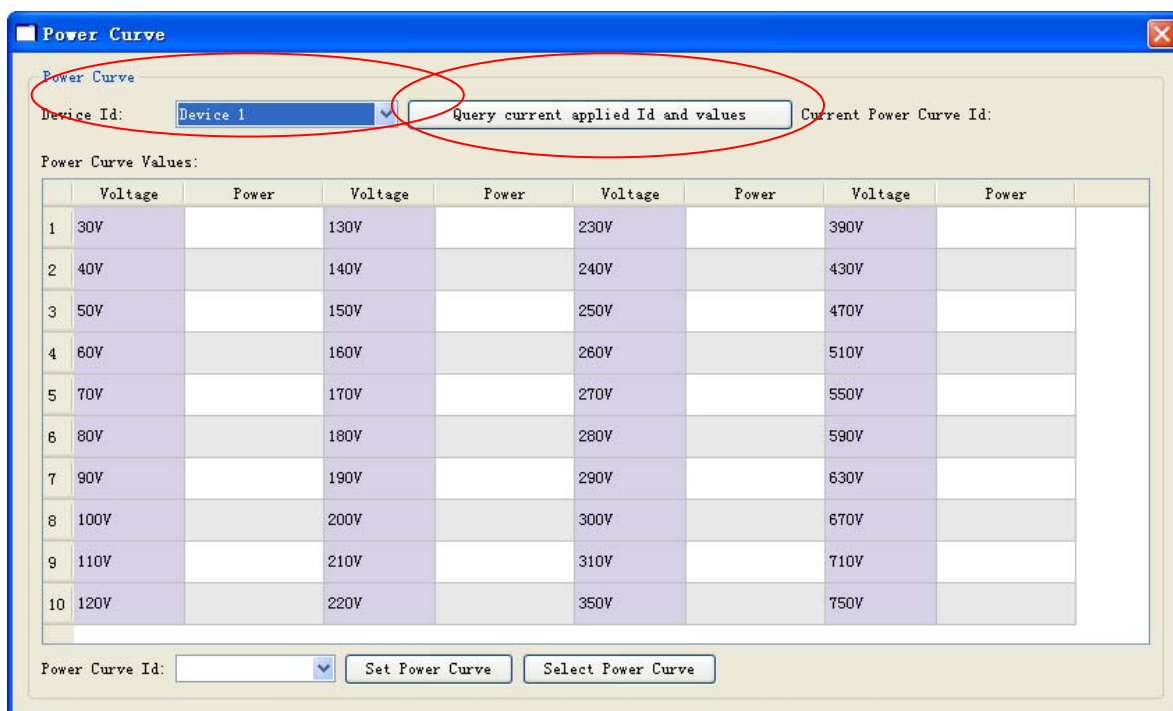
Comm Settings Grid 语言

Device name	Title	Content
Device name Device 1	4 Grid Current	1.7A
	5 Grid Frequency	49.98Hz
	6 State	Generating
	7 Output Power	398.82w
	8 Current Month Energy	17kwh
	9 Last Month Energy	12kwh
	10 Energy	29kwh
	11 Product type	2kW
	12 Country Standard	VDE0126
	13 Power Curve Id	1



Query current Power Curve Id and values

Choose the Device Id, and query the current id and values. (In example, it is Device 1, Power Curve Id: 1)



Power Curve

Power Curve

Device Id: Current Power Curve Id: 1

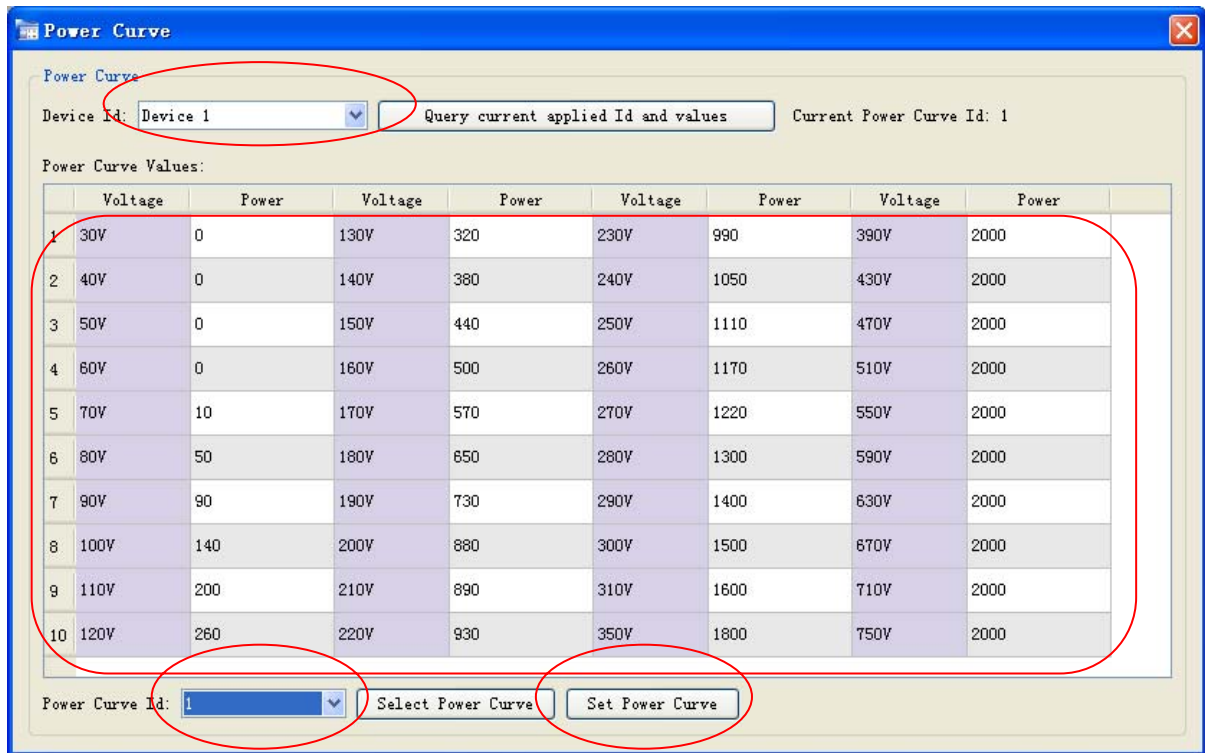
Power Curve Values:

	Voltage	Power	Voltage	Power	Voltage	Power	Voltage	Power
1	30V	0	130V	320	230V	990	390V	2000
2	40V	0	140V	380	240V	1050	430V	2000
3	50V	0	150V	440	250V	1110	470V	2000
4	60V	0	160V	500	260V	1150	510V	2000
5	70V	10	170V	570	270V	1250	550V	2000
6	80V	50	180V	650	280V	1350	590V	2000
7	90V	100	190V	800	290V	1500	630V	2000
8	100V	140	200V	820	300V	1580	670V	2000
9	110V	200	210V	890	310V	1680	710V	2000
10	120V	260	220V	980	350V	1850	750V	2000

Power Curve Id:

Set Power Curve

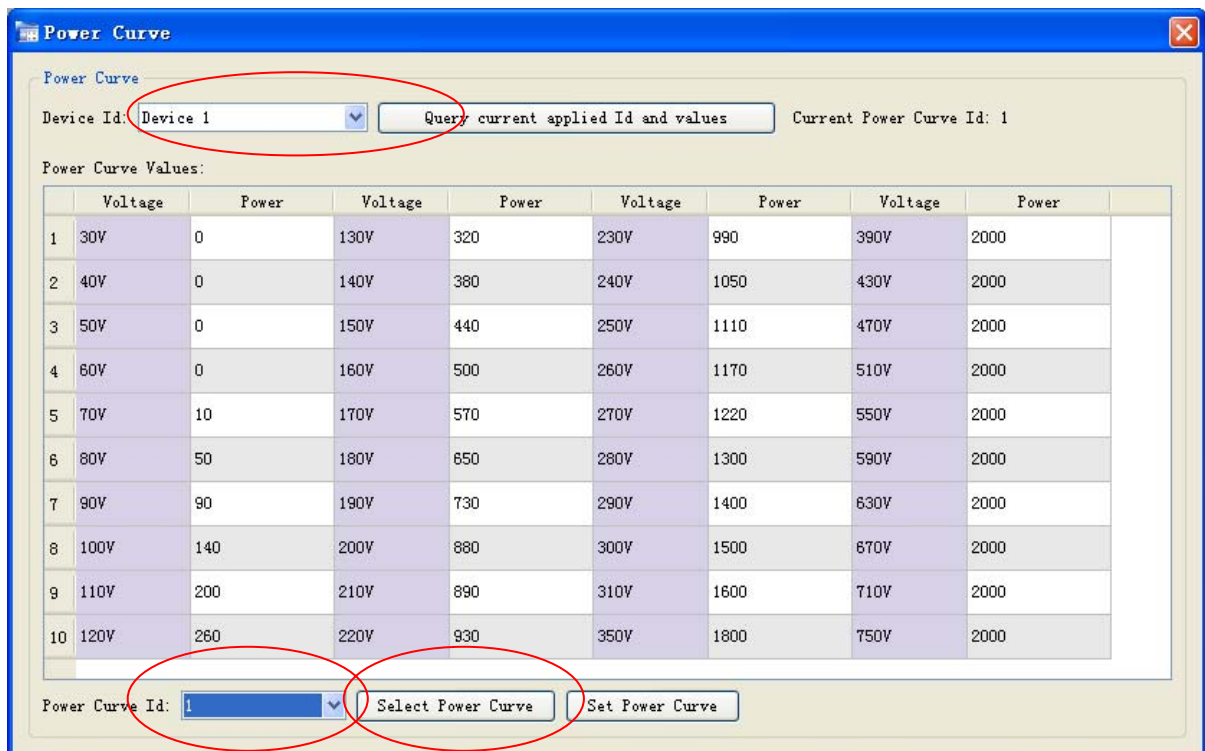
Choose Device Id, Power Curve Id, and modify the Power Curve values if need, click Set Power Curve button. (There are three power curve id No.1,2,3 available can be set values, the power curve Id No.4 is read only, cannot be set, just can be selected.)



Select Power Curve Id

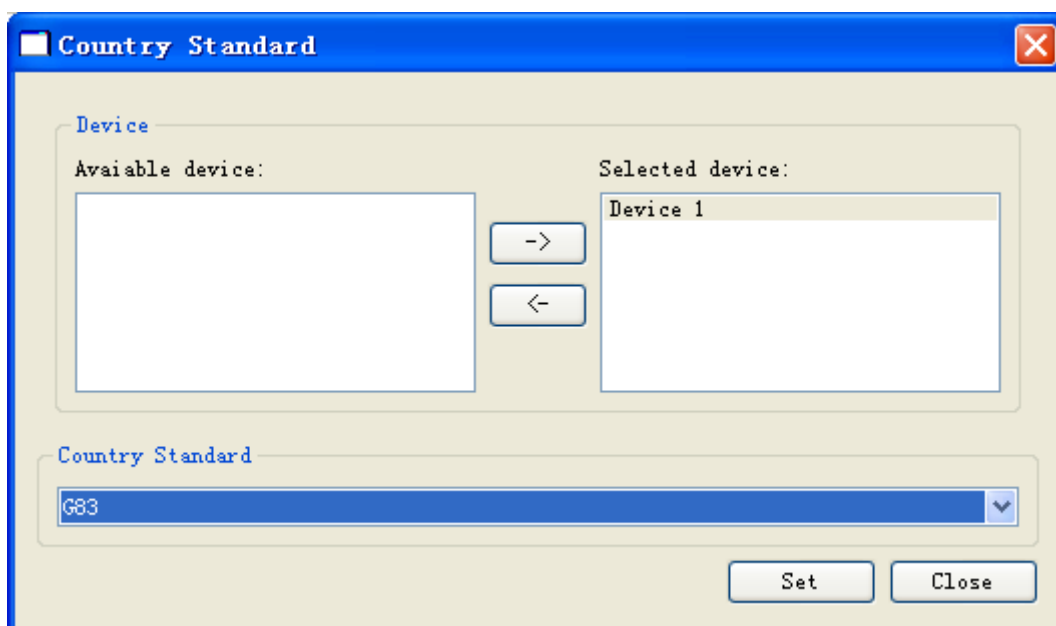
Choose Device Id, Power Curve Id, click Select Power Curve button.

This power curve id is will be selected as current power curve id.



- **Country Standard:**

You can choose the “**Device Address**” and “**Country Standard**”, click “**Set**”. In the main interface, you will see the Country Standard has been changed.



- **Password:**

In this section, you can change the “**User Password**”.

