

Ginlong Software_PV User Manual

(Rev. 0.3)

1. Hardware list

Ginlong Inverter, RS485 Cable, PC, RS485/RS232 Converter.



Picture 1. Ginlong Inverter



Picture 2. RS485 Cable



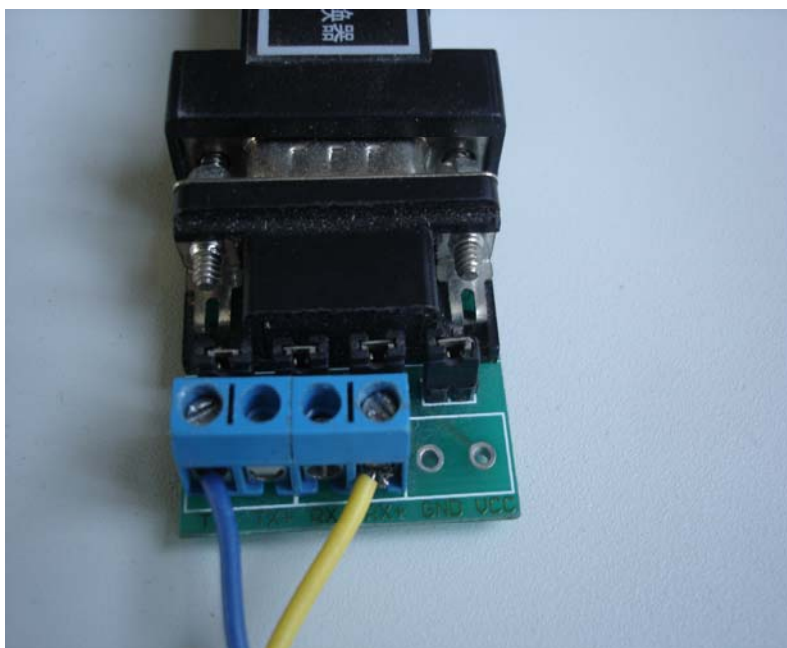
Picture 3. RS485/RS232 Converter



Picture 4. PC

2. How to establish a connection between inverter and PC

As shown in picture 1, connect RS485 cable to the COM interface on the Ginlong inverter. The other end of RS485 cable needs to be connected with RS485/RS232 converter. There are two RS 485 cables with different color (yellow and blue); the yellow one needs to be connected with RX + and the blue one to TX- as below in picture 5. Finally, plug Connect RS485/RS232 converter into the PC as below showed in picture 6 and make sure all of the connections are OK.



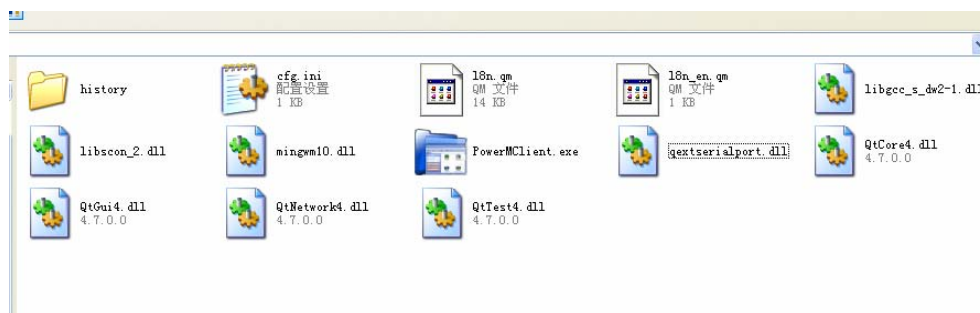
Picture 5. RS 485 cable with RS485/RS232 Converter



Picture 6. RS485/RS232 Converter connected with PC

3. Start with Ginlong Monitor Software

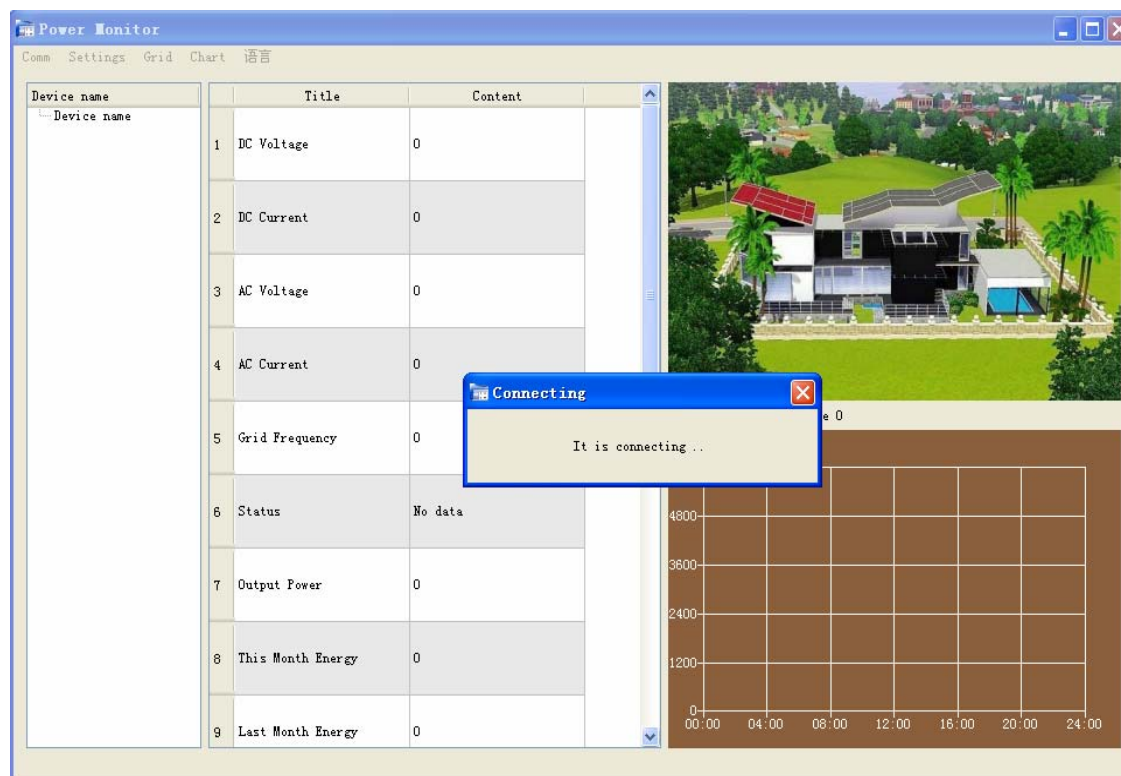
Double click the icon of PowerMClient to start to run Ginlong software as showed below, or start it from the window program menu.



Picture 7. Start Ginlong software

4. Address Connection

After Clicking the icon, the power monitor is searching the inverters which device Id address are from 1 to 2 by default.

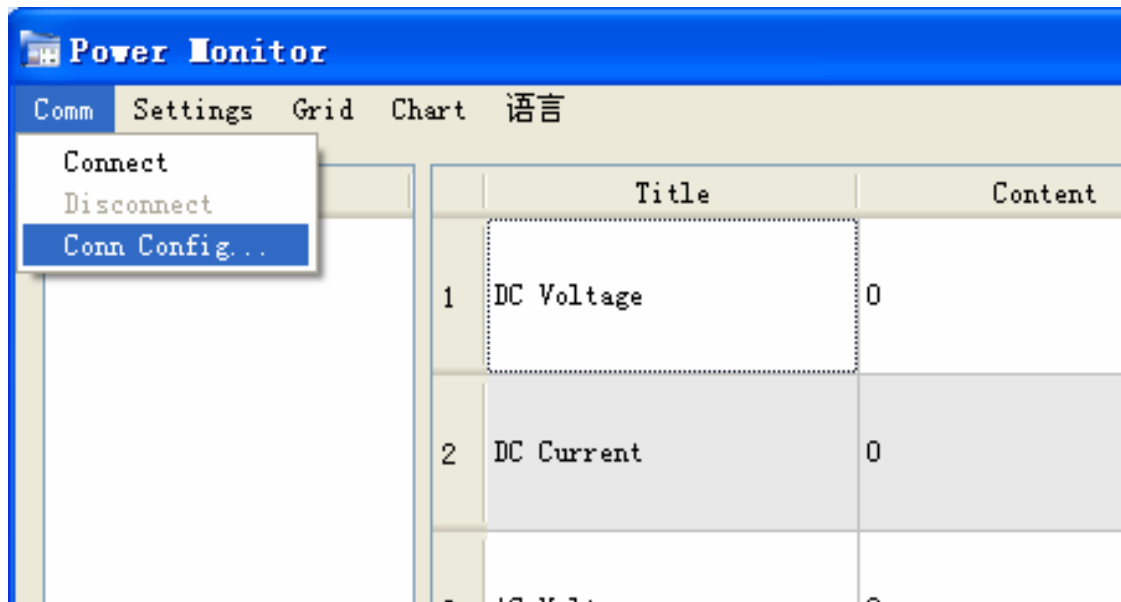


Picture 8. Address Connection Interface

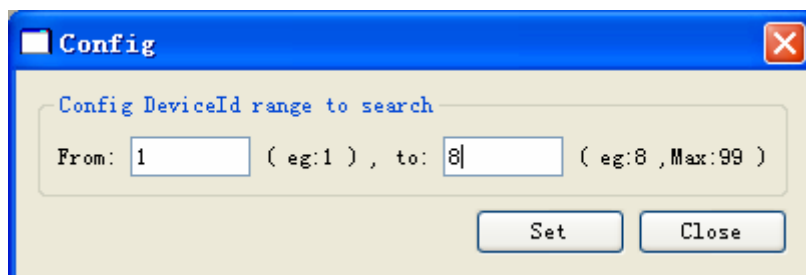
If inverters are found, the monitor will get to main interface with inverters' information.

If inverters are not found, maybe the cable is not connected well, or it is also possible that the

inverter's device Id address is not in the searching range, please use **Comm->Conn Config...** to change the device searching range.



Your inverter's Id address should be in the "From", "to" searching range, then it can be found.(you can get the inverter Id address by operating the inverter's LCD control panel), then please set the "From", "to" searching address value and reconnect by clicking Conn->Connect.



5. Main Interface

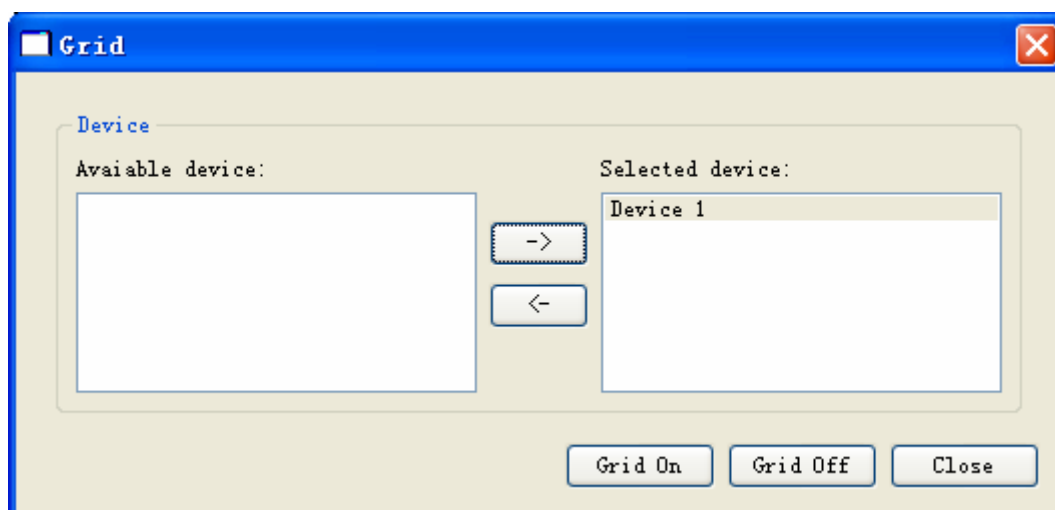
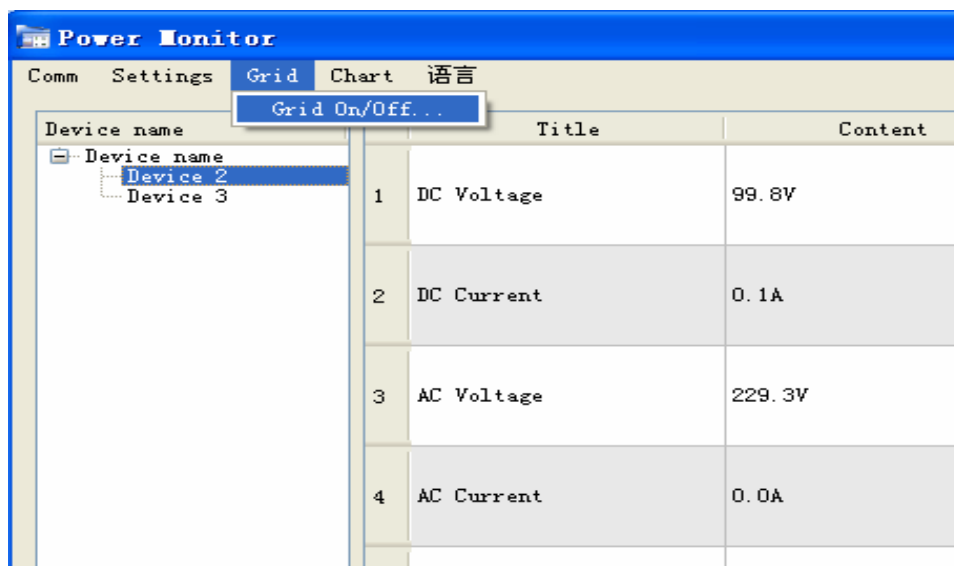


Picture 9. Software main interface

- 1 For the settings.
- 2 Device list for inverters
- 3 The spot values for each inverter, eg: current month energy, last month energy, etc
- 4 The realtime output power curve graph

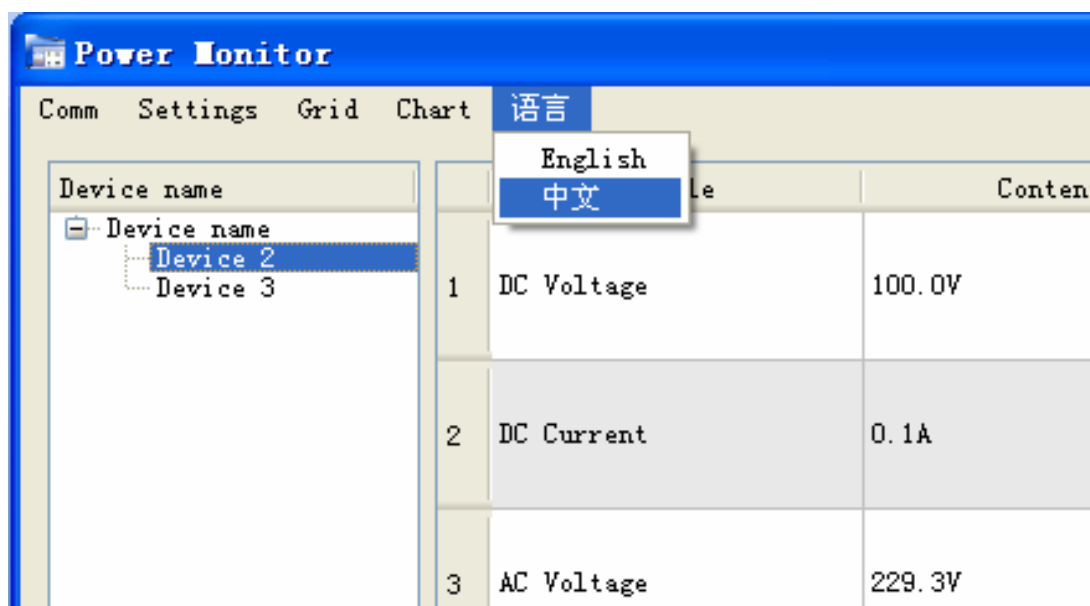
● **Grid control:**

After you logged in, If you want to do the settings (e.g. Country standards selection, etc), please click the “**Grid Off**” before you do any setting. After setting is done, click “**Grid On**” and check the information you set.



- **Language:**

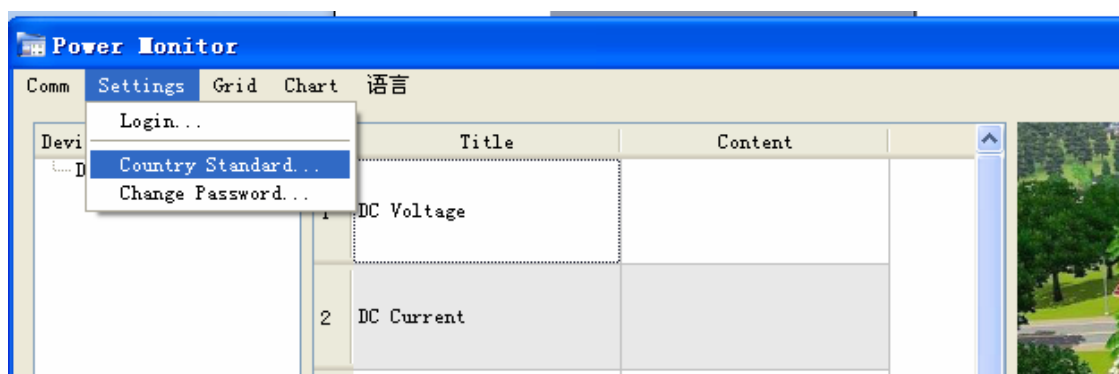
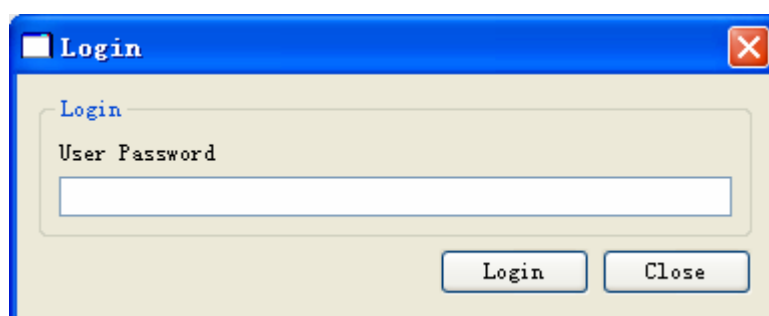
This menu button below is used to select the right language of the software.



6. How to use the Advanced Setting

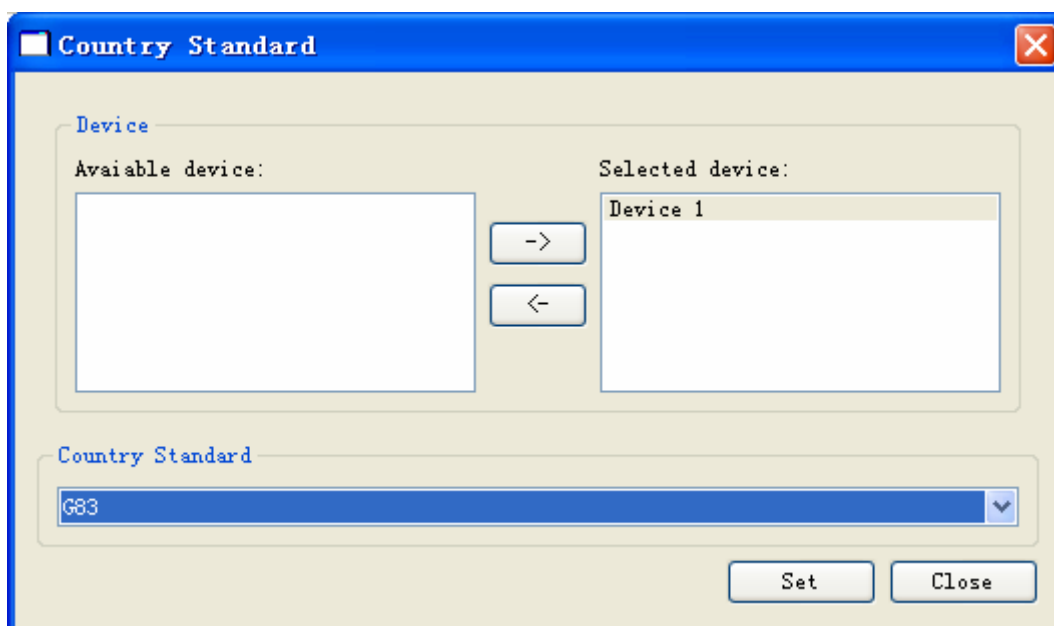
- **User Login:**

After login, we can do the settings, The initial password is "0010".



- **Country Standard:**

You can choose the “**Device Address**” and “**Country Standard**”, click “**Set**”. In the main interface, you will see the Country Standard has been changed.



- **Password:**

In this section, you can change the “**User Password**”.

